

Allerta

An Open Source Signage Typeface
Designed by Matt McInerney

WHAT IS ALLERTA?

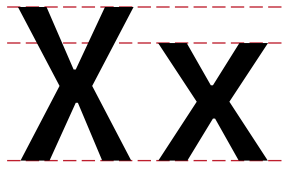
Allerta is an open source typeface designed for use in signage. Allerta was designed to be easily and quickly read from a distance. Each letter exploits the most unique aspects of that individual letter so that each character can be easily distinguished from any other.

Allerta has been released as an open source project so that those countries, communities, and/or organizations without a proper signage system may have a way of quickly designing and implementing one. While Allerta is complete with a large character set, because it is open source, modification and expansion is encouraged.

For the more urgent of circumstances, Allerta Stencil and an accompanying kit have been designed so that signage can be created with nothing more than the kit of letters, a can of spray paint, and the nearest available substrate. Although the stencil kit may allude the finer points of typographic spacing, it is intended to serve the most basic purpose of signage: guiding people towards their destination or towards assistance.

The name Allerta is derived from the origins of the word alert (adj. swift, v. to advise or warn). The Italian origin all'erta literally means on the lookout.

DESIGN FEATURES



TALL X-HEIGHT

The lowercase letters are proportionally very large in comparison to uppercase letters to allow for larger letterforms and greater counter space.



OPEN COUNTERS & APERTURES

The negative space is just as important as the positive space when identifying a letterform. Allerta maximizes that negative to increase legibility.



EVERY LETTER IS DIFFERENT

For example: the lowercase 'l' can be easily distinguished from the uppercase 'l'



ICONS INCLUDED

The icons included are ideal for supplementing message on signs with symbols representing things like 'food' and 'aid.'

Allerta Medium

LATIN CAPITALS

ABCDEFGHIJKLMNOPQRSTUVWXYZ
ÁÀÂÃÄÅÁÀÂÃÄÅÇÉÈÊËÏÎĲŃÓÒÔÕŠ
SSÚÛÜÝŶŸŽƆP

LATIN LOWERCASE

abcdefghijklmnopqrstuvwxyz
áàâãäåáàâãäåçéèêëïîĳŃóòôõšβúû
üýÿÿžđp

FLOATING ACCENTS

ˆ˜˘˙˚˛˜˝

PROPORTIONAL LINING FIGURES

1234567890

CURRENCY

₪çƒ€¥₪

MATHEMATICAL, DASHES, QUOTES, AND MISC...

+ - x ÷ = % - - - () [] / \ “ ” “ ” ‹ › ‹ ‹ ‹ ‹ ‹ ‹ ‹ ‹ @ *

PUNCTUATION

.,:;! ? i ç

ICONS

☑️🌾💧🏠🚗🚲🚶➡️←️↑️↓️↙️↘️⌛

Allerta Stencil

LATIN CAPITALS

ABCDEFGHIJKLMNOPQRSTUVWXYZ
ÁÀÃÄÅǺĀĀĂĄĄÇÉÈĚĔĕĦİİłŃÓÒŎŏŔŖ
ŠŚÚÛÜŸŶÝŹĐP

LATIN LOWERCASE

abcdefghijklmnopqrstuvwxyz
áàãäåǻāāăǻçéèěĕĥīīłńóòŏŏŕŕ
šśúûüÿŷÿźđp

FLOATING ACCENTS

ˆ˜˘˙˚˛˜˝
ˆ˜˘˙˚˛˜˝

PROPORTIONAL LINING FIGURES

1234567890

CURRENCY

\$çf€¥₹

MATHEMATICAL, DASHES, QUOTES, AND MISC...

+ - x ÷ = % - - - () [] / \ " " " " < > « » ® *

PUNCTUATION

.,:;!?i¿

ICONS

✚ 🌿 ⚰ 🏠 🚗 ⚙️ ⚡ ➡ ⬅ ⬆ ⬇ ↶ ↷ ↘ ↙



Restrooms

Subway

Broughton Street

A

B

C

S

1



↖ Savannah



↖ Savannah



Stop
Arrêt

The Allerta Kit

For Urgent Signage Needs

THE ALLERTA KIT

The kit is a physical collection of letters created by laser cutting Allerta Stencil into cardboard and using a simple dieline for each letter. The dieline is used to create a locking mechanism, so that each letter can be locked into the next. This makes spray painting one message on multiple substrates quick and easy.

The physical kit only exists as a prototype at the moment, but the files needed to create a kit are included in the downloadable file. Kits can be hand, laser, or die cut.

Allerta





Hôpital



Hôpital

THE ALLERTA KIT

 Hôpital

 Food



LETTER EXAMPLE



LOCKING DIAGRAM

