



HEXAGON
GEOSPATIAL



Producer
Suite

POWER
PORTFOLIO

LAStools for IMAGINE 2015

INSTALLATION GUIDE

Version 15.00.00

July 2015

Copyright

© 2014 Intergraph® Corporation and/or its affiliates. Hexagon Geospatial is a part of Intergraph. All Rights Reserved.

Warning: This computer program, including software, icons, graphical symbols, file formats, and audio-visual displays; may be used only as permitted under the applicable software license agreement; contains confidential and proprietary information of Intergraph and/or third parties which is protected by patent, trademark, copyright and/or trade secret law and may not be provided or otherwise made available without proper authorization.

Restricted Rights Legend

Use, duplication, or disclosure by the Government is subject to restrictions as set forth in subparagraph (c) (1) (ii) of the Rights in Technical Data and Computer Software clause at DFARS 252.227-7013 or subparagraphs (c) (1) and (2) of Commercial Computer Software -- Restricted Rights at 48 CFR 52.227-19, as applicable.

Unpublished - rights reserved under the copyright laws of the United States.

Intergraph Corporation P.O. Box 240000 Huntsville, AL 35813

Terms of Use

Use of this software product is subject to the End User License Agreement ("EULA") delivered with this software product unless the licensee has a valid signed license for this software product with Intergraph Corporation. If the licensee has a valid signed license for this software product with Intergraph Corporation, the valid signed license shall take precedence and govern the use of this software product. Subject to the terms contained within the applicable license agreement, Intergraph Corporation gives licensee permission to print a reasonable number of copies of the documentation as defined in the applicable license agreement and delivered with the software product for licensee's internal, non-commercial use. The documentation may not be printed for resale or redistribution.

Warranties and Disclaimers

All warranties given by Intergraph Corporation about software are set forth in the EULA provided with the software or with the applicable license for the software product signed by Intergraph Corporation, and nothing stated in, or implied by, this document or its contents shall be considered or deemed a modification or amendment of such warranties. Intergraph and its suppliers believe the information in this publication is accurate as of its publication date.

The information and the software discussed in this document are subject to change without notice and are subject to applicable technical product descriptions. Intergraph Corporation and its suppliers are not responsible for any error that may appear in this document.

Trademarks

Intergraph, the Intergraph logo, and GeoMedia are registered trademarks of Intergraph Corporation. Hexagon and the Hexagon logo are registered trademarks of Hexagon AB or its subsidiaries. Microsoft and Windows are registered trademarks of Microsoft Corporation. Bing is a trademark of Microsoft Corporation. Google Maps is a trademark of Google Incorporated. Pictometry Intelligent Images is a registered trademark of Pictometry International Corporation. ERDAS, ERDAS IMAGINE, Stereo Analyst, IMAGINE Essentials, IMAGINE Advantage, IMAGINE Professional, IMAGINE VirtualGIS, Mapcomposer, Viewfinder, Imagizer, LPS, and ERDAS APOLLO are registered trademarks and exclusive property of Intergraph Corporation.

Other brands and product names are trademarks of their respective owners.

Government Reserved Rights. MrSID technology incorporated in the Software was developed in part through a project at the Los Alamos National Laboratory, funded by the U.S. Government, managed under contract by the University of California (University), and is under exclusive commercial license to LizardTech, Inc. It is used under license from LizardTech. MrSID is protected by U.S. Patent No. 5,710,835. Foreign patents pending. The U.S. Government and the University have reserved rights in MrSID technology, including without limitation: (a) The U.S. Government has a non-exclusive, nontransferable, irrevocable, paid-up license to practice or have practiced throughout the world, for or on behalf of the United States, inventions covered by U.S. Patent No. 5,710,835 and has other rights under 35 U.S.C. § 200-212 and applicable implementing regulations; (b) If LizardTech's rights in the MrSID Technology terminate during the term of this Agreement, you may continue to use the Software. Any provisions of this license which could reasonably be deemed to do so would then protect the University and/or the U.S. Government; and (c) The University has no obligation to furnish any know-how, technical assistance, or technical data to users of MrSID software and makes no warranty or representation as to the validity of U.S. Patent 5,710,835 nor that the MrSID Software will not infringe any patent or other proprietary right. For further information about these provisions, contact LizardTech, 1008 Western Ave., Suite 200, Seattle, WA 98104.

Contents

- Installing LAStools for IMAGINE.....5
 - Introduction5
 - Prerequisites5
 - LAStools5
 - Installation5
 - Uninstallation.....7

Installing LAsTools for IMAGINE

Introduction

This document shows how to install and configure LAsToolsForIMAGINE, an ERDAS IMAGINE 2015 extension that leverages the power of LAsTools in the IMAGINE Ribbon and Spatial Modeler environment.

Prerequisites

LAsTools

LAsTools must be installed on the system and you will need to let IMAGINE know the location of the installation.

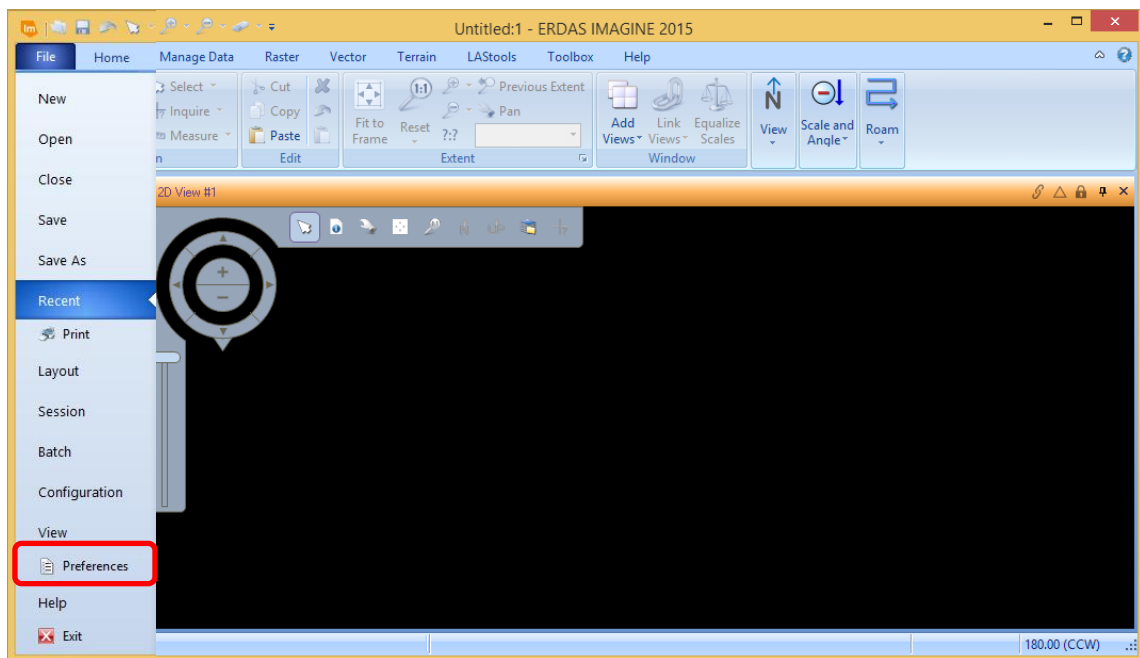
Installation

LAsToolsForIMAGINE is deployed as an ERDAS IMAGINE Extension. Installation and removal is controlled by a configuration file LAsToolsForIMAGINE_Extension.xml, located in the top-level folder in the LAsToolsForIMAGINE installation media.

To install the extension:

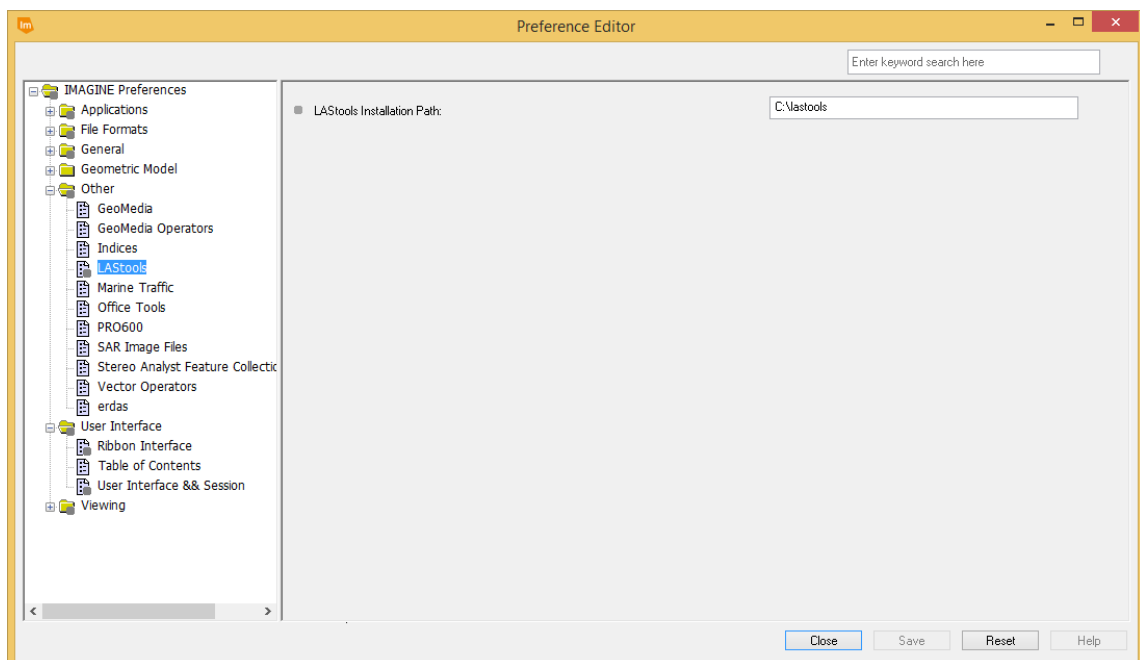
1. Start IMAGINE 2015.
2. Choose "File -> Configuration -> Configure Extension".
3. In the "Configure Extension" dialog choose the LAsToolsForIMAGINE_Extension.xml installation configuration file (this can be accomplished by navigating to it or entering the full path to it).
4. Click the "Install" button.
5. This causes installation to start. If UAC is enabled Windows will ask for permission to run "FileCopier.exe", allow it to run and it will install the files needed by the extension.
6. Exit the "Configure Extension" dialog.
7. Exit and then restart IMAGINE.
8. The extension should now be active (For LAsToolsForIMAGINE, there should be an extra IMAGINE ribbon button called "LAsTools" and there will be a new Spatial Modeler category named "LAsTools").
9. Before you can run LAsToolsForIMAGINE you need to let IMAGINE know where to find your LAsTools installation.
10. Choose "File -> Preferences".

Installing LAsTools for IMAGINE

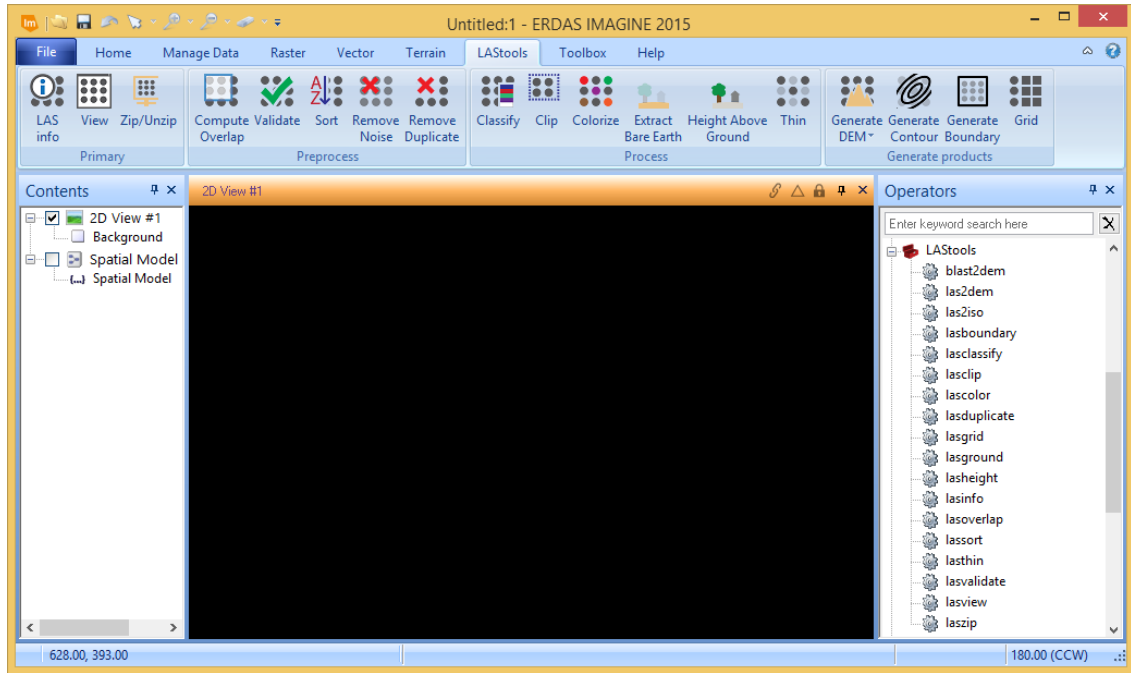


11. In the Preferences Dialog choose “Other -> LAsTools”.

12. Set the LAsTools Installation Path to the location of your LAsTools distribution.



You can now switch to the LAsTools tab and start working with LAsTools, or open a new Spatial Modeler editor and add LAsTools operators to your models.



Uninstallation

You must have access to the LAsToolsForIMAGINE_Extension.xml installation configuration file to uninstall LAsToolsForIMAGINE.

1. Exit and restart IMAGINE so that certain dynamic parts of the extension are not loaded into memory. (Note that ribbon tabs and buttons will still be visible at this time).
2. Choose "File -> Configuration -> Configure Extension".
3. In the "Configure Extension" dialog choose the LAsToolsForIMAGINE_Extension.xml installation configuration file (this can be accomplished by navigating to it or entering the full path to it).
4. Click the "Remove" button.
5. This causes the removal to occur and if UAC is enabled Windows will ask for permission to run "FileCopier.exe", allow it to run and it will remove the extensions files. Note that "FileCopier.exe" not only removes files, but it adds files if you are installing an extension.
6. Exit the "Configure Extension" dialog.
7. Exit and then restart IMAGINE.
8. The extension has now been removed and its components are no longer visible in IMAGINE.